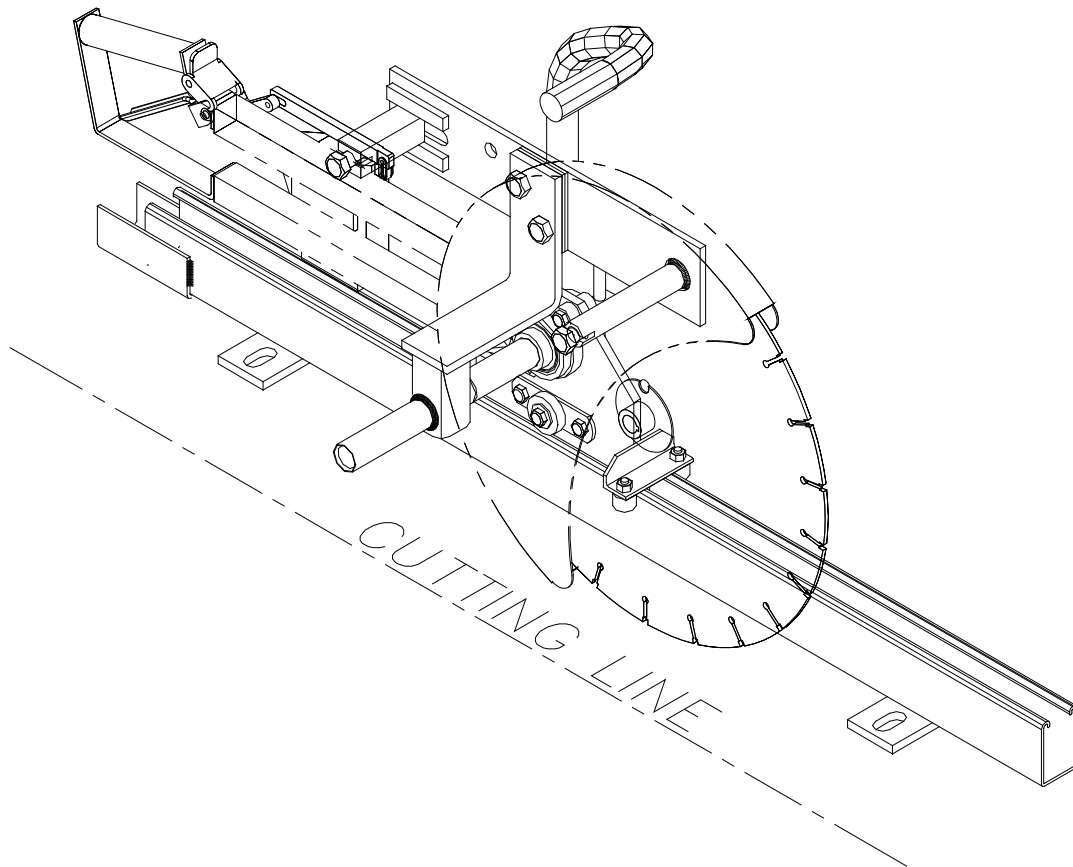




SAW GUIDE INSTRUCTIONS



REIMANN & GEORGER CORPORATION
CONSTRUCTION PRODUCTS
P/N 6122085

BUFFALO, NY
02/14/11

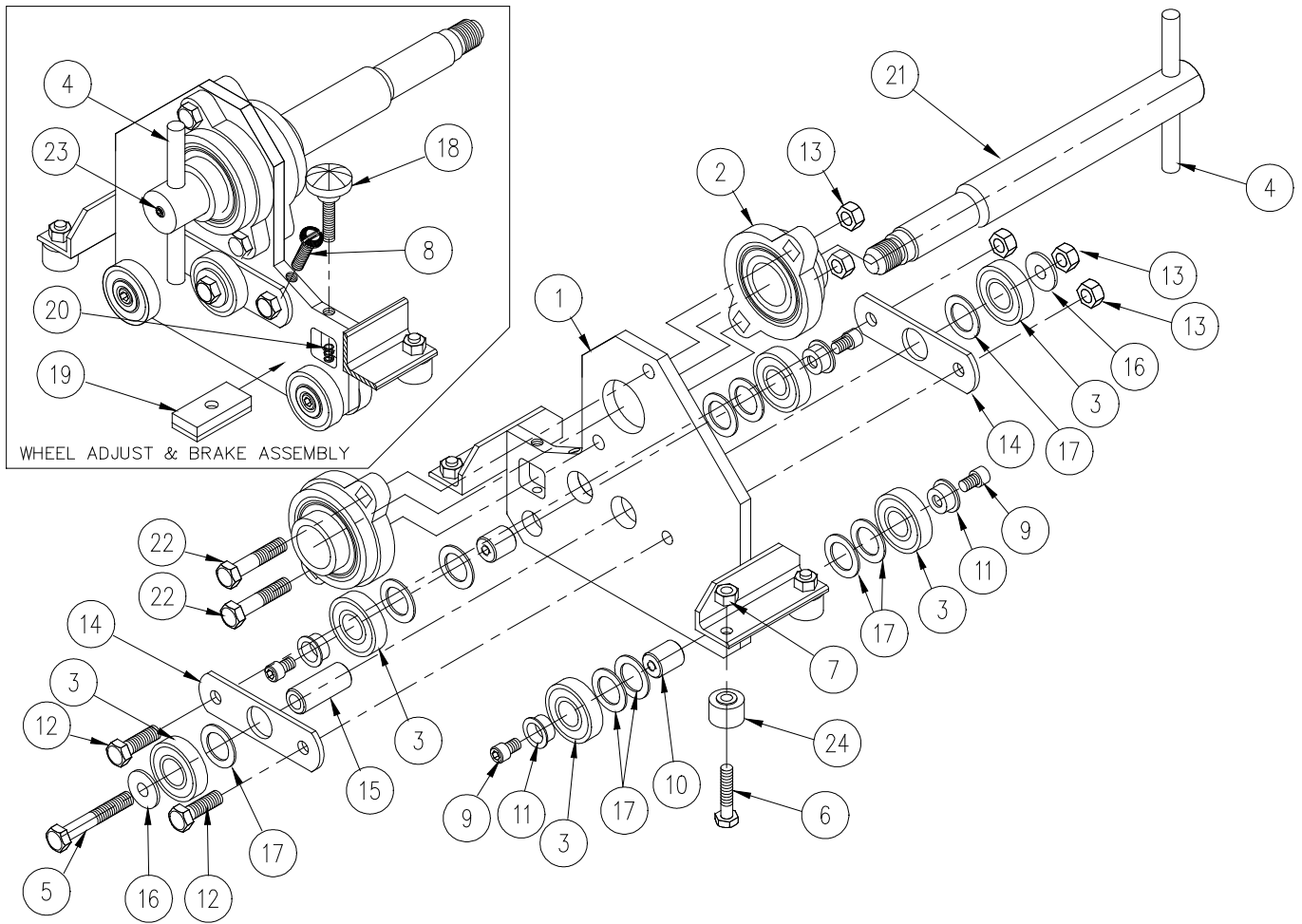
5 PARTS LIST

The following parts list applies to the Wall Mounted Saw Guide only. The parts list for the Hydrasaw models S14, S16 S20 or S24 are in the separate manual supplied for this item. Each item number on the following parts list can be matched with the item number shown on the assembly drawing.

5.1 SAWGUIDE CARRIAGE ASSEMBLY

Refer to Figure 5-1.

| Item Number | Part Number | Quantity | Description |
|-------------|-------------|----------|--|
| 1 | 2011535 | 1 | Carriage Frame |
| 2 | 5100925 | 2 | Flanged Bearing |
| 3 | 5111920 | 6 | Ball Bearing |
| 4 | 2011605 | 1 | Shaft Handle |
| 5 | 5806228 | 1 | 5/16 x 2 Hex Head Cap Screw |
| 6 | 5806207 | 4 | 1/4 x 1 Hex Head Cap Screw |
| 7 | 5806366 | 4 | 1/4 Toplock Hex Nut |
| 8 | 5806331 | 1 | 1/4 x 1 Truss Head Screw |
| 9 | 5811930 | 4 | 1/4 x 3/8 Socket Head Cap Screw |
| 10 | 2011515 | 2 | Fixed Bearing Shaft |
| 11 | 2011505 | 4 | Bearing Retainer |
| 12 | 5806224 | 2 | 5/16 x 1 Hex Head Cap Screw |
| 13 | 5806367 | 5 | 5/16 Toplock Hex Nut |
| 14 | 2011520 | 2 | Bearing Side Plate |
| 15 | 2011510 | 1 | Adjustable Bearing Shaft |
| 16 | 5806401 | 2 | 5/16 SAE Flat Washer |
| 17 | 5811940 | 10 | 5/8" ID, 1" OD x .048" Thick Steel Shim Washer |
| 18 | 6411945 | 1 | Knurled Knob |
| 19 | 2011530 | 1 | Carriage Brake Assembly |
| 20 | 5811935 | 1 | 3/16" OD x 1" Compression Spring |
| 21 | 2011580 | 1 | Pivot Shaft |
| 22 | 5806226 | 2 | 5/16 x 1-1/2" Hex Head Cap Screw |
| 23 | 5806308 | 1 | 1/4 x 3/16 Set Screw |
| 24 | 5111925 | 4 | 3/4" Camrol Bearing |

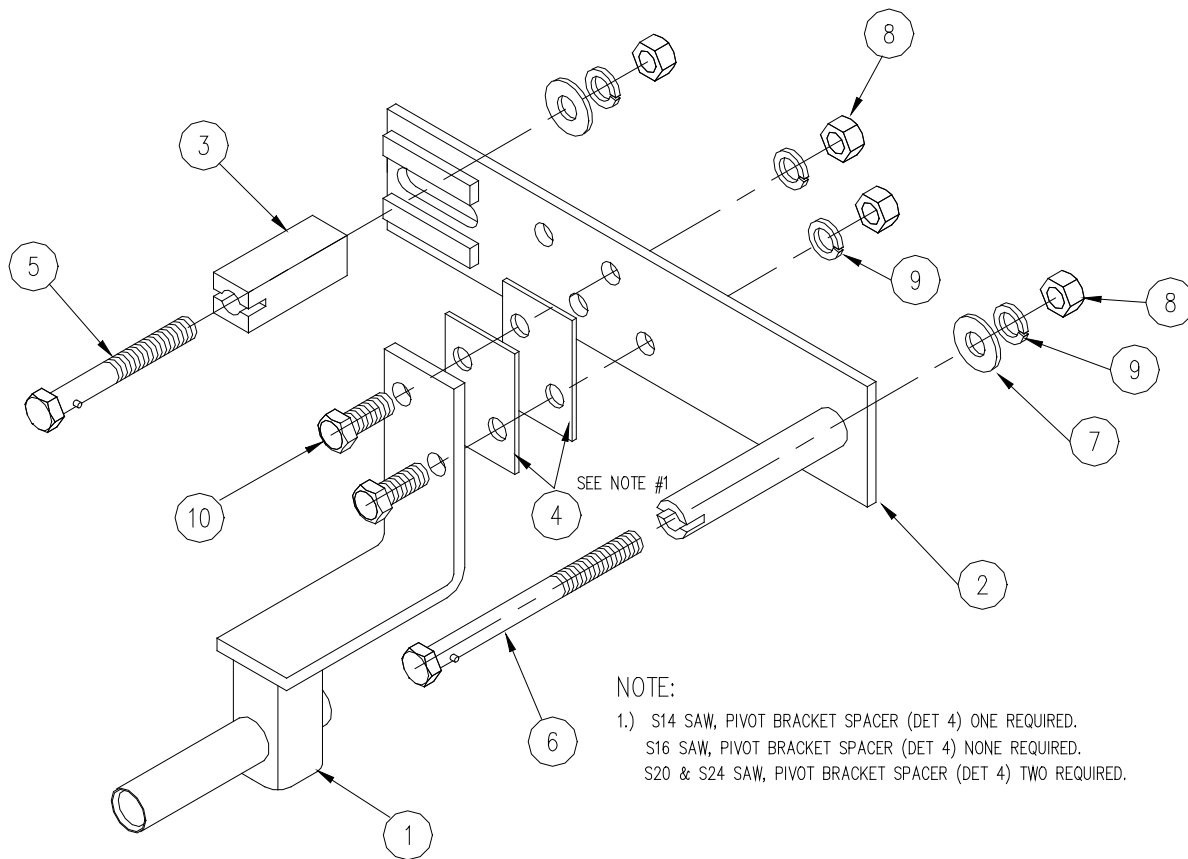


CARRIAGE ASSEMBLY
Figure 5-1.

5.2 SAW MOUNT BRACKET ASSEMBLY

Refer to Figure 5-2.

| Item Number | Part Number | Quantity | Description |
|-------------|-------------|----------|--------------------------------|
| 1 | 2011570 | 1 | Pivot Mounting Bracket |
| 2 | 2011555 | 1 | Pivot Bracket Plate |
| 3 | 2011590 | 1 | Saw Mounting Spacer |
| 4 | 2011560 | 2 | Pivot Bracket Spacer |
| 5 | 2011545 | 1 | 4" Saw Mounting Bolt |
| 6 | 2011550 | 1 | 6" Saw Mounting Bolt |
| 7 | 5806400 | 2 | 1/2 SAE Flat Washer |
| 8 | 5806379 | 4 | 1/2 Hex Nut |
| 9 | 5806412 | 4 | 1/2 External Tooth Washer |
| 10 | 5806282 | 2 | 1/2 x 1-1/2 Hex Head Cap Screw |



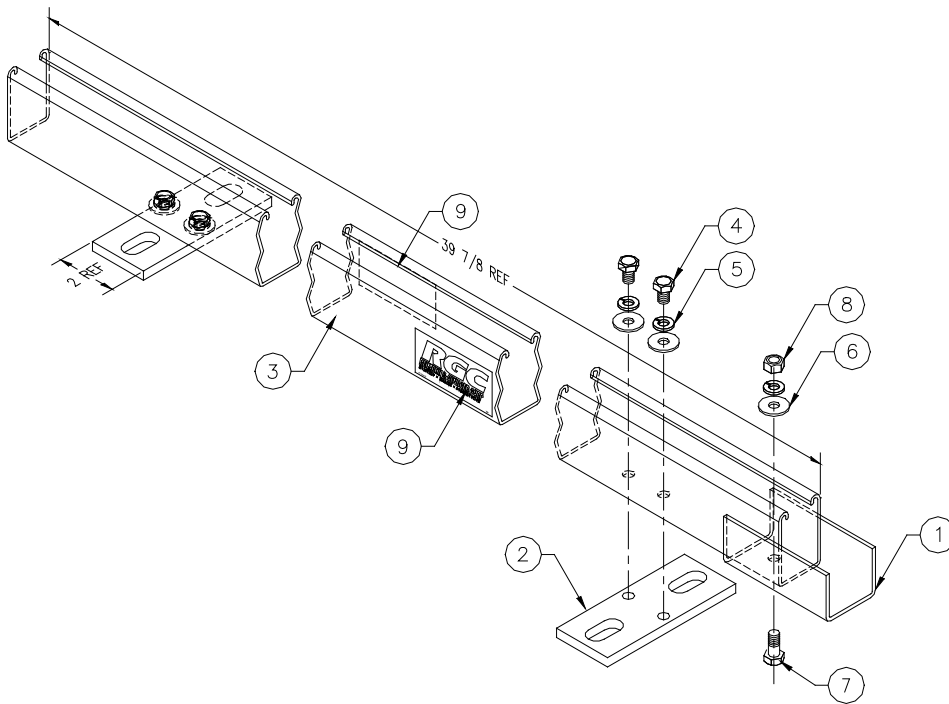
HYDRASAW MOUNTING BRACKET

Figure 5-2.

5.3 SAW GUIDE 39" TRACK ASSEMBLY

Refer To Figure 5-3.

| Item Number | Part Number | Quantity | Description |
|-------------|-------------|----------|----------------------------------|
| 1 | 2011625 | 1 | Track Splice |
| 2 | 2011610 | 2 | Track Mounting Plate |
| 3 | 2011705 | 1 | 39" Track |
| 4 | 5806220 | 4 | 5/16-18 x 1/2 Hex Head Cap Screw |
| 5 | 5806402 | 5 | 5/16" External Tooth Washer |
| 6 | 5806401 | 5 | 5/16" SAE Flat Washer |
| 7 | 5806222 | 1 | 5/16-18 x 3/4 Hex Head Cap Screw |
| 8 | 5806375 | 1 | 5/16" Hex Nut |
| 9 | 6204405 | 2 | Decal "RGC" Logo |

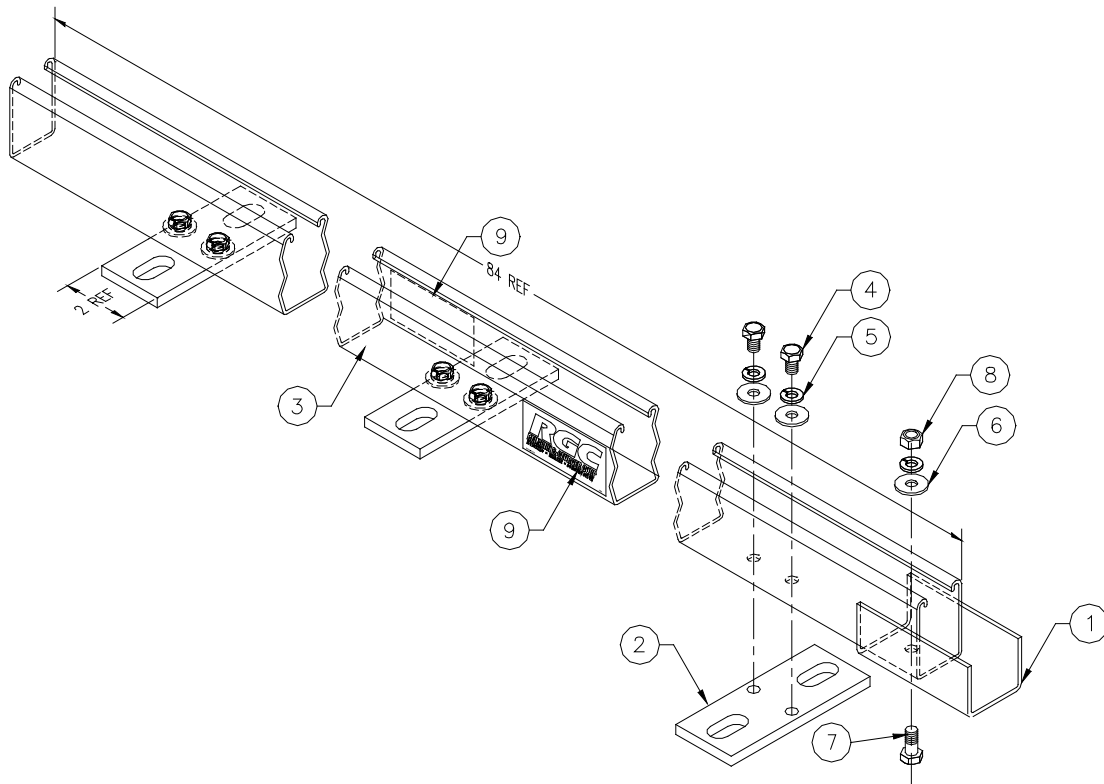


**SAW GUIDE 39" TRACK ASSEMBLY
FIGURE 5-3.**

5.4 SAWGUIDE 84" TRACK ASSEMBLY

Refer To Figure 5-4.

| Item Number | Part Number | Quantity | Description |
|-------------|-------------|----------|----------------------------------|
| 1 | 2011625 | 1 | Track Splice |
| 2 | 2011610 | 3 | Track Mounting Plate |
| 3 | 2011835 | 1 | 84" Track |
| 4 | 5806220 | 6 | 5/16-18 x 1/2 Hex Head Cap Screw |
| 5 | 5806402 | 7 | 5/16" External Tooth Washer |
| 6 | 5806401 | 7 | 5/16" SAE Flat Washer |
| 7 | 5806222 | 1 | 5/16-18 x 3/4 Hex Head Cap Screw |
| 8 | 5806375 | 1 | 5/16" Hex Nut |
| 9 | 6204405 | 2 | Decal "RGC" Logo |



**SAW GUIDE 84" TRACK ASSEMBLY
FIGURE 5-4.**