

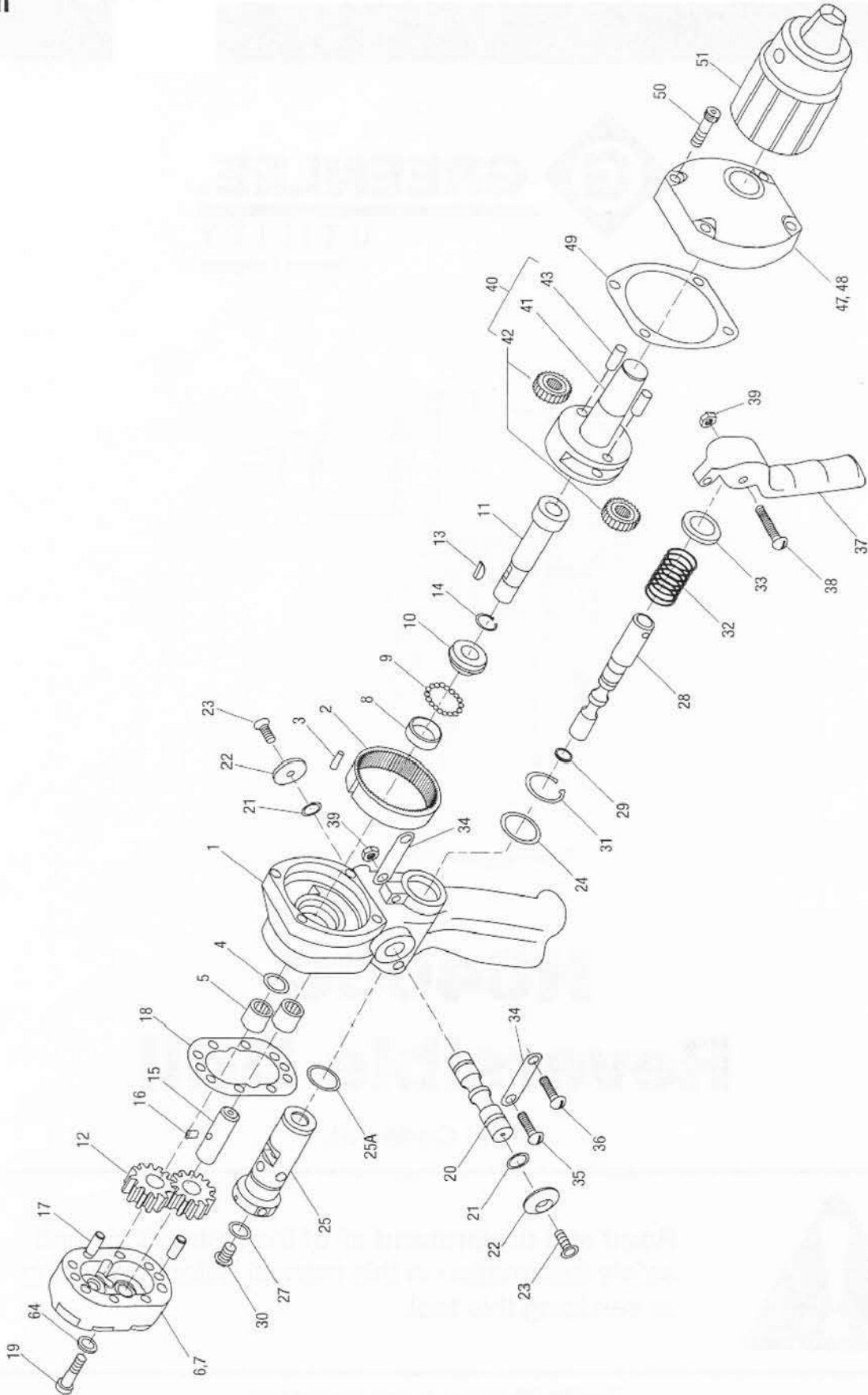


1/2” REVERSIBLE HYDRAULIC DRILL INSTRUCTIONS

**REIMANN & GEORGER CORPORATION
CONSTRUCTION PRODUCTS**

**BUFFALO, NY
LE 09/10 F**

Illustration



Parts List

Key	Description	Qty	Key	Description	Qty
1	Handle, Insulated (includes items 2-5).....	1	29*	O-ring, .312 x .437 x .062-70	1
2	Gear	1	30	Screw, Cap, 5/16-18 x .375, Button Head Socket	1
3	Dowel Pin, .125 x .500	1	31	Retaining Ring, .875, External	1
4*	O-ring, .500 x .687 x .093-80	1	32	Spring, Compression, .635 x .845 x 1.25	1
5	Needle Bearing, .439 x .625 x .500.....	2	33	Washer, Flat, .580 x .937 x .050, Stainless Steel	1
6	Motor Cap (includes item 7)	1	34	Link	2
7	Needle Bearing, .439 x .625 x .500.....	2	35	Screw, Machine, #10-24 x .875, Round Head	1
8	Outer Race	1	36	Screw, Machine, #10-24 x .750, Round Head	1
9	Ball, .125 Diameter, Steel.....	18	37	Trigger	1
10	Inner Race	1	38	Screw, Machine, #10-24 x 1.25, Round Head	1
11	Drive Shaft with Gear.....	1	39	Nut, Hex, #10-24 x .187, Lock.....	3
12	Gear, 11-Tooth	2	40	Spindle Assembly (includes 41-43).....	1
13	Woodruff Key, #213	1	41	Frame, Planet Gear	1
14	Retaining Ring, .437, External	1	42	Gear, 21-Tooth (with Needle Bearing).....	2
15	Shaft, Idler	1	43	Dowel Pin, .250 x .625	2
16	Drive Pin, .123 x .209 with Square Head.....	1	47	Case Assembly, H6400C (includes item 48).....	1
17	Dowel Pin, .250 x .625	2	48	Bearing, Bronze	1
18*	Gasket, 2.09 x 3.09 x .0015.....	1	49*	Gasket.....	1
19	Screw, Cap, 1/4-20 x 1.25, Socket Head	8	50	Screw, Cap, 1/4-20 x 1.00, Socket Head	4
20	Spool, Directional.....	1	51	Chuck	1
21*	O-ring, .437 x .562 x .062-68	2	55*	O-ring, .644 x .818 x .087-90	1
22	Button	2	60*	O-ring, .468 x .624 x .078-90	1
23	Screw, Cap, #10-24 x .500, Flat Head	2	64	Washer, Hardened Flat, 6 mm	8
24*	O-ring, .875 x 1.000 x .062-70	1			
25	Sleeve, Super Spool (for serial numbers after 99273)	1			
25A*	O-ring, .787 x .889 x .051-70 (for serial numbers after 99273)	1			
26*	O-ring, .750 x .875 x .062-90	1			
27*	O-ring, .437 x .625 x .093-90	1			
28	Super Spool.....	1	*	Packing Kit (includes all items marked with an asterisk)	